

2025

ENTRANT BOOKLET

BDQ Design Awards



TABLE OF CONTENTS

About the Awards	3
Entry Requirements	3
Eligibility for Entry	5
Entry Fees	6
Judging Criteria	7
Award Categories	8
Category Descriptions	9
Entry Questions	13
Additional Information	14
Submission Deadline	14
Submission Checklist	15
Questions? Concerns?	15

ABOUT THE AWARDS

Building Design Queensland invites entries for our 2025 Building Design Awards. The awards profile excellence in building design, as well as profiling the importance of the building design profession to both the building industry, and to the broader community. The awards showcase the design skills of BDQ members in the areas of:

- Residential and Multi-Residential Design
- Commercial, public and Industrial Design
- Sustainability
- Innovative use of Products
- Small lot and Small Home Design
- Interior Design
- Students and Emerging Designers

BDQ Members play an important role in providing the public with designs that fulfill many and varied criteria. We invite members to profile their skills by entering this year's awards, thereby being eligible to reap the benefits of the marketing and promotional opportunities from the awards.

We draw your attention to the fact that the awards strive to profile design excellence, so only your best projects should be submitted.

ENTRY REQUIREMENTS

Entries will be submitted using the online platform, Award Force.

1. Answers to each question

The online entry platform will allow you to write answers to 7 (8 for Category 4: Sustainable Building Design) questions, which form the criteria for awards judging. Please see further in this document for a list of all questions.

You must answer every question (relevant to your category). Leaving a question blank, writing 'nil', leaving '-' or any other response which does not make reference to your project will result in a reduced overall score.

Include key details from the Client Design Brief and any site or other difficulties faced in the design along with details of the design solutions and outcomes. Concise dot points are the best way to ensure that you get your message across. Provide enough words to convince the judges but not so many that they tire before finishing the story.

2. Working Drawings / Floor Plans

The floor plans and site plan with North Point must be included in each project entry. Sufficient elevations and sections should also be included where required to adequately show off the design features. You must submit these through the online entry platform as a PDF document.

3. Digital Photographs & Photograph Release Form

Photographs in JPEG format must be submitted as part of your online entry. High-resolution images are required for magazine production and event AV, so please ensure your photos have a resolution of at least 300 dpi. As a guide, your photos should be 5-10 MB in size. Please clearly label two hero shots (in landscape format) for use on awards certificates & event AV. The person who holds the copyright to the photos must give consent for the photos to be used. Please provide a **minimum of 12** digital photos for each entry. For alterations/ additions projects, please also include at least two "before" photos. Choose photos that best illustrate the category, for instance for interior design include internal photos, for overall building design make sure you have at least 6 external photos and 6 internal.

Entries with less than 12 photos will be disqualified.

Please ensure your photos illustrate an accurate representation of the entry – no photo-shopped elements.

Note: This does not apply to the Conceptual Design and Student Design Awards categories.

4. Owner Consent

You must have the owner's consent for the project to be entered into the regional and state awards. By entering your project into the awards, both you and the owner are granting BDQ permission to use photographs and any other submitted material for promotional or other purposes without any consideration or further permissions.

5. Previous Entries

The entry must not have been a category winner in the same entered category at any previous year's Queensland Building Design Awards – Regional Awards. The entry can, however, have been entered in previous years if no award was won.

6. Construction Cost

The entrant is to take all reasonable steps to obtain accurate information relating to construction cost which is the total construction cost of the project and project parts to be judged. The cost should be GST-inclusive. If you are entering an addition/alteration project you must take all steps necessary to establish the real cost of construction or full contract price for the entire project as presented.

7. License Scope

Entrants are responsible for ensuring their entered project is within the scope of their license class. BDQ may disqualify entries that are outside of the entrant's license class.

ELIGIBILITY FOR ENTRY

1. You are a:
 - a. **Full member of BDQ** with a **QBCC Building Design license**; a person or a company that holds a current QBCC building designer license appropriate to the scope of work and type of building project regarding the entry. (Note that you cannot enter an award on a QBCC nominee supervisor license) or;
 - b. **Full member of BDQ under the BDIP category** with a **qualification in Interior Design (Diploma or Degree)** and **accredited by BDQ** or;
 - c. **Full member of BDQ** who is a registered Architect.
 - d. **Student members of the BDQ** are only entering either or both of the two categories available to them.
2. Entrants must be a Member of Building Design Queensland in good standing. This means that your **membership fees must be paid up to date** for your entry to be accepted. If your membership is not paid by the due date, your entry will be forfeited and entry fees paid to BDQ will be retained. If you pay your membership by installment then you must have paid in full the installments due over the past twelve months and continue to pay your fees by their due dates.
3. The entrant or the practice owned by the entrant must be:
 - a. The **author of the works and the lawful owner of the intellectual property** (IP) contained within the works or;
 - b. The author but NOT the owner of the IP, **have and provide to the judges project-specific authority by the owner of the IP** to enter the project into the design awards together with any conditions imposed by the owner of the IP. *Note: If you are or were an employee, you are most likely NOT the owner of the IP unless a specific agreement has been made with the employer.*
 - c. **Joint submissions** can be entered as long as they are agreed in writing between both parties and both parties are individually eligible to enter the awards.
4. *Submissions must be on original title sheets with company name and QBCC license number or Architect registration number visible and not be doctored from the original council approved and constructed documentation.*



ENTRY FEES

All entrants need to be aware, each successful regional project will automatically proceed to the State Design Awards, which will incur a fee. Once you pay the \$100+GST entrant fee for the Regional Awards, you're able to submit as many projects as you wish. The fee is per entrant not project.

Regional Awards	\$100 + GST per entrant
State Awards	\$250 + GST per entry
Student Awards	\$25 + GST per entry

If an entry wins at the Regional Design Awards, it will automatically progress to the State Design Awards and will attract the relevant entry fees. By entering a project into the awards you are agreeing to pay all applicable fees.

Entry fees do not include tickets to the Regional or State level presentation ceremonies.

A single project/house can be entered into multiple categories.

Each State entry will be subject to an entry fee, except for free categories as outlined in the Category Description.



JUDGING CRITERIA

A winner may be declared for all categories where one or more entries have been received. Joint winners may be declared in any category at the judges' discretion. The judges' decision is final and no correspondence about decisions will be acknowledged.

For each entry submission, the following judging criteria must be illustrated:

Satisfaction of the Brief

- Client requirements achieved
- Appropriate solutions for site
- Brief issues addressed

Solving Challenges

- climate
- accessibility
- topography
- budget
- site constraints

Construction Detail and Innovation

- use of materials
- construction methods
- appropriate detailing

Space Planning & Interiors

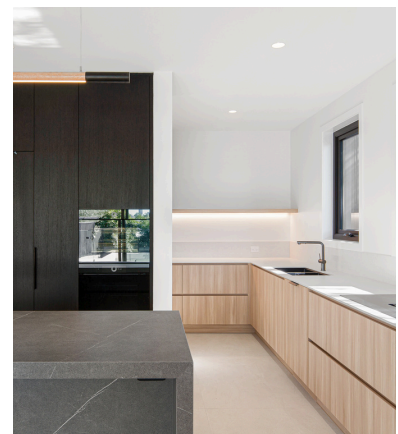
- interaction of spaces and zoning
- furnishability and circulation
- aesthetic appeal
- colours, lighting, materials
- ergonomics of work areas
- accessibility of rooms and spaces
- safety and security

Built Form

- consistency of expression
- appropriate scale and balance
- relationship to surrounds
- well-developed detailing
- aesthetic appeal

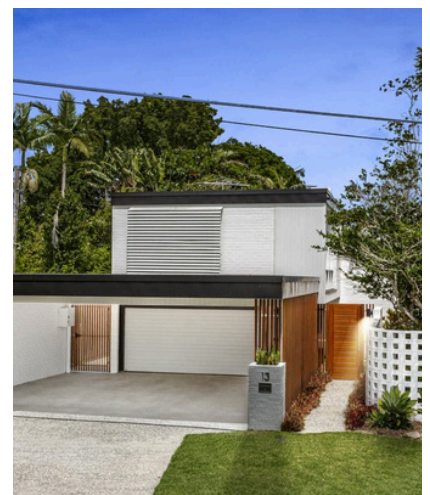
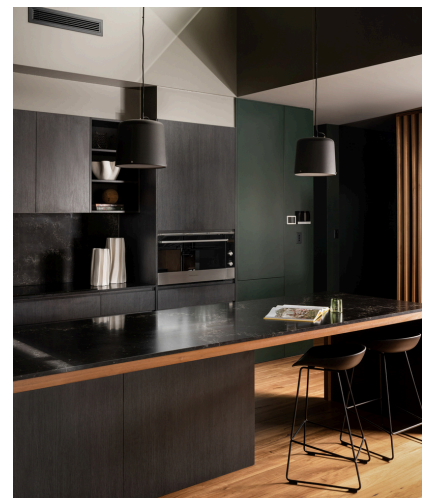
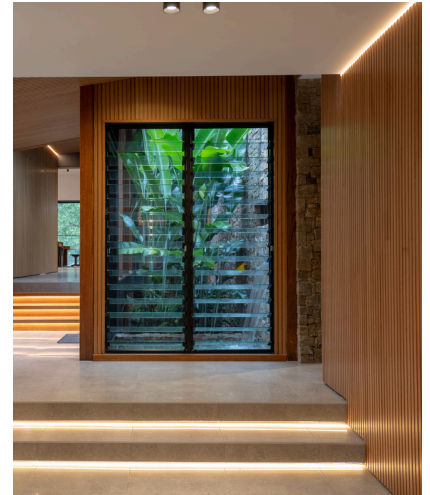
Sustainable Design

- Environmental impact on site
- Environmental impact on the community
- Use of sustainable materials
- Renewable power generation
- Water saving strategy
- Waste minimisation strategy
- Energy efficiency rating



CATEGORIES

1. Industrial Building Design
2. Public Building Design
3. Peter Modini Memorial Award for New Commercial Buildings up to \$5M
4. New Commercial Building over \$5M
5. Commercial Renovation
6. Commercial Interiors
7. Residential Interiors
8. Best Bathroom
9. Best Kitchen
10. Best Space
11. Residential Renovation up to \$500K
12. Residential Renovation \$500K - \$750K
13. Residential Renovation \$750K - \$1M
14. Residential Renovation over \$1M
15. Small Home Design
16. Small Lot Design
17. New Home up to \$500K
18. New Home \$500K - \$750K
19. New Home \$750K - \$1M
20. New Home \$1M - \$1.5M
21. New Home \$1.5M - \$2.5M
22. New Home over \$2.5M
23. New Multi-Res Project up to and including 3 storeys
24. New Multi-Res Project four or more residential storeys
25. Special Project
26. Heritage Building Design
27. Sustainable Building Design - Commercial
28. Sustainable Building Design - Residential
29. Conceptual Design - Residential
30. Conceptual Design - Commercial
31. James Hardie Design Excellence Award
32. The James Hardie Student Design Awards - Building Design
33. The James Hardie Student Design Awards - Interior Design
34. Emerging Building Design Industry Professional
35. People's Choice Award
36. Doug Mayes Memorial Medal
37. Life Member Award



CATEGORY DESCRIPTIONS

1. Industrial Building Design

- Class 7/8, Type A/B/C construction
- Minimum qualification required to enter: Full member with QBCC Building Design Low-Rise license or Architect Registration number.

2. Public Building Design

- Class 9, Type A/B/C construction
- Minimum qualification required to enter: Full member with QBCC Building Design Low-Rise license or Architect Registration number.

3. Peter Modini Memorial Award for New Commercial Buildings up to \$5M

- Construction cost to include GST
- Class 5/6, Type A/B/C construction
- Minimum qualification required to enter: Full member with QBCC Building Design Low-Rise license or Architect Registration number.

4. New Commercial Building over \$5M

- Construction cost to include GST
- Class 5/6, Type A/B/C construction
- Minimum qualification required to enter: Full member with QBCC Building Design Low-Rise license or Architect Registration number.

5. Commercial Renovation

- Class 5/6 Type A/B/C construction
- provide before and after photos
- Minimum qualification required to enter: Full member with QBCC Building Design Low-Rise license or Architect Registration number.

6. Commercial Interiors

- Class 3/5/6/7/8/9, Type A/B/C construction
- Minimum qualification required to enter: Full member with QBCC Building Design Low-Rise license, or Architect Registration number, or Full member with Interior Design Qualification accredited by BDQ.
- Entrant must have managed the design, implementation, and refurbishment of the interior space including space planning, colour scheme, materials & surfaces, fittings & furnishings, lighting and decorative elements

7. Residential Interiors

- Class 1/2/3/4, Type C construction
- Minimum qualification required to enter: Full member with QBCC Building Design Low-Rise license, or Architect Registration number, or Full member with Interior Design Qualification accredited by BDQ.
- Entrant must have managed the design or refurbishment of the interior space including space planning, colour scheme, materials & surfaces, fittings, furnishings, and lighting.
- Please provide 12 unique photos of the INTERIOR. A lack of 12 internal photos may see your entry disqualified.

8. Best Bathroom

- A Bathroom in any class of building that's new or renovated
- Provide a set of documents demonstrating space planning, colour scheme, materials & finishes, furnishings, and lighting
- Ensure there are enough images of the bathroom submitted
- Any class or type of construction
- This category is available to everyone
- Minimum of 4 and maximum of 12 images

9. Best Kitchen

- A Kitchen in any class of building that's new or renovated
- Provide a set of documents demonstrating space planning, colour scheme, materials & finishes, furnishings, and lighting
- Ensure there are enough images of the Kitchen submitted
- Any class or type of construction
- This category is available to everyone
- Minimum of 4 and maximum of 12 images

10. Best Space

- A space, internal or external, with defined boundaries and a specific purpose
- Any class or type of construction
- new or renovated and must not be a bathroom or kitchen
- This category is available to everyone
- Minimum of 4 and maximum of 12 images
- Ensure submission defines the actual space and only that space is reflected in the photos.
- Clearly define the "Best Space" area on the floor plan via shading or outlining.

11-14. All Residential Renovation categories

- Construction cost to include GST
- Class 1, Type C construction
- Minimum qualification required to enter: Full member with QBCC Building Design Low-Rise license or Architect Registration number.

15. Small Home Design

- Where the total gross floor area of the house does not exceed 150m², regardless of the size of the lot. If the design is more than 1 storey the combined floor area of all floors must not exceed 150m². The gross floor area includes roofed porches, patios, garages, and carports.
- Class 1, Type C construction
- Minimum qualification required to enter: Full member with QBCC Building Design Low-Rise license or Architect Registration number.

16. Small Lot Design

- Where the total size of the lot does not exceed 350m²
- Class 1, Type C construction
- Minimum qualification required to enter: Full member with QBCC Building Design Low-Rise license or Architect Registration number.

17-22. All New Homes Categories

- Construction cost to include GST
- Class 1, Type C construction
- Minimum qualification required to enter: Full member with QBCC Building Design Low-Rise license or Architect Registration number.

23. New Multi-Residential Project up to and including 3 storeys

- Up to 3 residential storeys or 1 carpark level and 2 residential storeys
- Class 1/2/3, Type A/B/C construction
- Minimum qualification required to enter: Full member with QBCC Building Design Low-Rise license or Architect Registration number.

24. New Multi-Residential Project four or more residential storeys

- Four residential storeys and up, or carpark level and 3 residential storeys and up
- Class 2/3, Type A construction
- Minimum qualification required to enter: Full member with QBCC Building Design Open license or Architect Registration number.

25. Special Project

- A structure or project that does not fall within any other available categories such as bridge, truck wash, etc.
- Minimum qualification required to enter: Full member with QBCC Building Design Low-Rise license or Architect Registration number.

26. Heritage Building Design

- Development entered in the Queensland Heritage Register such as on or adjoining a State Heritage Place or a Protected Area, or development in an area of local heritage significance as per a Local Heritage Register or Local Government Planning Scheme
- Any Class or type of construction
- Minimum qualification required to enter: Full member with QBCC Building Design Low-Rise license or Architect Registration number.

27-28. Sustainable Building Design - Commercial & Residential

- Project with sustainable features above and beyond standard six-star elements
- Any Class or type of construction
- Minimum qualification required to enter: Full member with QBCC Building Design Low-Rise license or Architect Registration number.
- Please provide the following information with your entry:

Energy rating;

Summary of site-specific climate conditions, summary of thermal design principles employed, summary of energy efficiency measures employed, summary of water efficiency measure employed and sustainable materials used.

29-30. Conceptual Design - Residential & Commercial

- Must be an actual commissioned project for a client that has not yet and will most likely never be built
- Any class and type of construction
- Minimum qualification required to enter: Full member with QBCC Building Design Low-Rise license or Architect Registration number.
- Provide plans and 3D conceptual drawings along with a design brief and budget

31. James Hardie Design Excellence Award

- A project that showcases the use of James Hardie products.
- Entrant MUST specify products used.
- Any class and type of construction.
- Minimum qualification required to enter: Full member with QBCC Building Design Low-Rise license or Architect Registration number, or BDIP member with Interior Design Qualification, accredited by BDQ.

32-33. The James Hardie Student Design Awards - Building / Interior Design

- These are two separate categories but the same student can enter both if they have school projects that fit under both.
- For both categories, the top 3 finalists will receive a free ticket to the State Design Awards and the winner will be rewarded \$1000 cash.
- Minimum qualification required to enter: Student or Graduate member

34. Emerging Building Design Industry Professional

- Outstanding Building Design Industry Professional who is at the beginning of their career.
- Employees nominate team members within their business answering questions about the nominee's role, connection to the industry, ongoing commitment to learning, and rapport with clients, consultants, etc.
- Minimum qualifications required to enter: The Nominator must be a Full Member and the Nominee must be a BDQ Member.

35. People's Choice Award

- This will include every project that progresses to a State Finalist level (ie: wins a Regional award)
- A link to the voting platform will be shared with everyone and we encourage all entrants to invite family, friends, clients, and associates to vote

36. Doug Mayes Memorial Medal

- The Doug Mayes Memorial Medal may be presented each year at the State Design Awards to a member who has provided outstanding service to BDQ at the branch level. The Medal recognises those members who have performed any services above and beyond that required of the position.
- Branches must decide as a collective if they wish to nominate any member for this award. Nominate and find more criteria [here](#).

37. Life Membership Award

- Life Membership is awarded at the State Design Awards in recognition of a BDQ member who has performed services above and beyond those that are required to the Association for more than 15 years.
- Nominate and find more criteria [here](#).

ENTRY QUESTIONS

The following information must be provided with each entry.

- Your QBCC license number & class or your Architect Registration number.
- Building classification of your entry project according to ABCB.

The following questions will be asked for each entry. Not answering a relevant question will detract from your overall score.

1. Design Brief

Describe the needs of the project, the budget, and the desired outcome.

2. Challenges

Describe your response to any particular challenges presented by the project. Think about topography, climate, accessibility, space, budget, or site constraints that applied to your project.

3. Innovation

Describe any project-specific innovations that have been included in the design. This could include repurposing materials or a unique design feature.

4. Space Planning & Interiors

Describe how the internal spaces suit the functional requirements of the occupants including layout, flow, lighting, and materials & surfaces. Describe the interior design, if this was part of your brief, including colour scheme, furnishings, and decorative elements.

5. Stand Out

Describe the single most outstanding feature of this project.

6. Built Form

Describe how the built form is appropriate to the needs of the project including scale, balance and general appearance.

7. Hero Statement

Provide a hero statement for your project in no more than 100 words using **full sentences**. This will be used in BDQ's promotional material (including the voice-over at the State Design Awards), media statements, and the magazine for winning projects.

Only Category 4:

8. Sustainability

Describe the overall sustainability of the project and give a summary of each item below if applicable:

- a. Energy rating
- b. Thermal design principles employed
- c. Water efficiency measures
- d. Energy efficiency measures
- e. Sustainable materials

ADDITIONAL INFORMATION

1. Winners Receive

Apart from the associated publicity and accolade of winning an industry award, category winners at regional and state levels will receive a framed certificate. Certificates of Commendation may be awarded, at the Judges' discretion, to any additional outstanding entries. The winners of Residential Design of the Year and Commercial Design of the Year each receive a specially designed certificate commensurate with the prestige of the competition. Certificates, plaques, and trophies may not be reproduced without the written permission of BDQ.

2. Publicity

BDQ will use every endeavour to publicise the winners and entrants, in association with the sponsors of the Awards. BDQ will;

- Feature all winners on the BDQ website and Social Media Sites
- Use winning entrants on BDQ promotional material
- Use winning entrants on the BDQ magazine released after the SDAs.
- Provide winners of both the RDAs and SDAs winner banners.

Award winners are urged to profile their achievements through any promotional means available to them. Experience has shown that the achievement of a major industry award has been an excellent marketing tool for previous winners.

SUBMISSION DEADLINES

Design Award entries close: **5pm, Sunday 18th May 2025**

Doug Mayes, Life Membership nominations close: **5pm, Sunday 18th May 2025**

Emerging BDIP entries close: **5pm, Sunday 18th May 2025**

Student entries close: **5pm, Monday 14th July**

All entries must be submitted online via Award Force by these dates.



SUBMISSION CHECKLIST

- Awards Information Booklet read and understood
- Owner's consent
- Photographer's consent
- Minimum of 12 High Resolution Photos uploaded
- Plans uploaded
- All questions relevant to your entry have been
- answered Entry Fee paid for each entrant
- Entries submitted on Award Force

QUESTIONS? CONCERNS?

If you have any questions or queries, please contact BDQ Head Office via admin@bdqld.com.au or **(07) 3067 7264**

To become a BDQ member (and be eligible to enter the BDQ Design Awards), head to www.BDQLD.com.au

